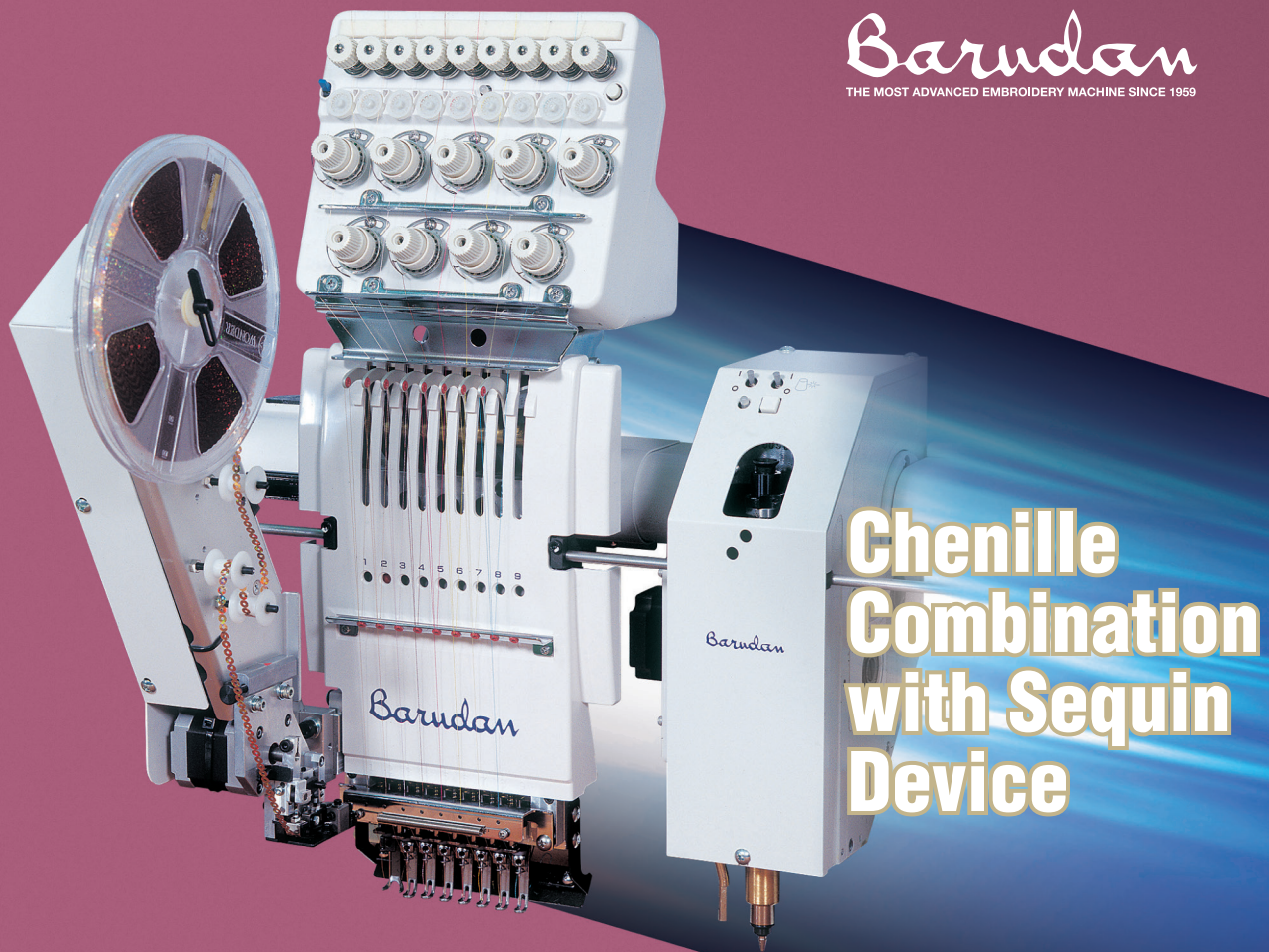


# Chenille Combination

**Barudan**  
THE MOST ADVANCED EMBROIDERY MACHINE SINCE 1959

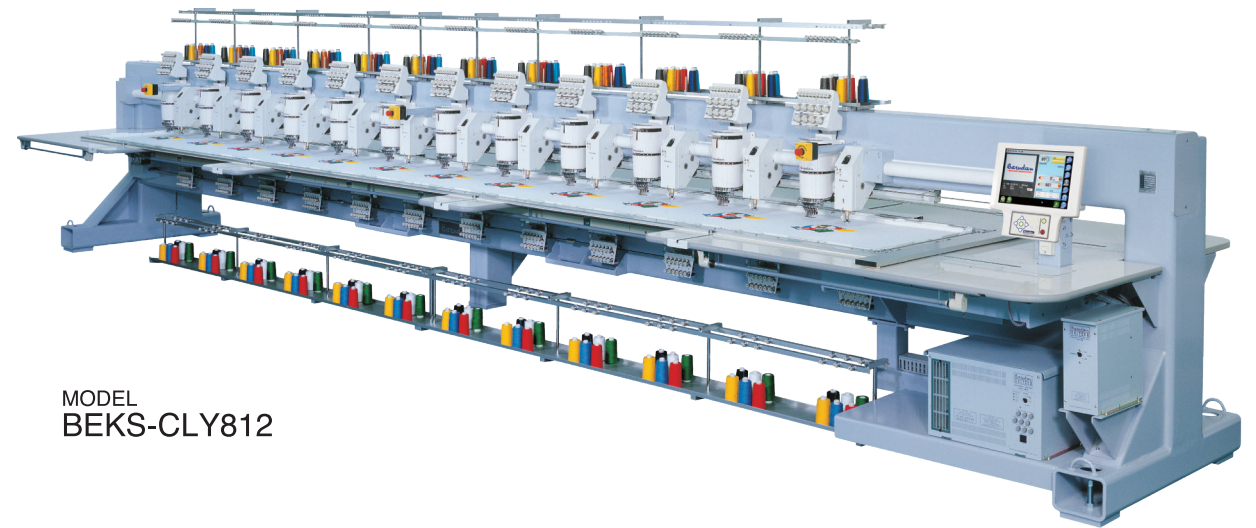


**Chenille  
Combination  
with Sequin  
Device**

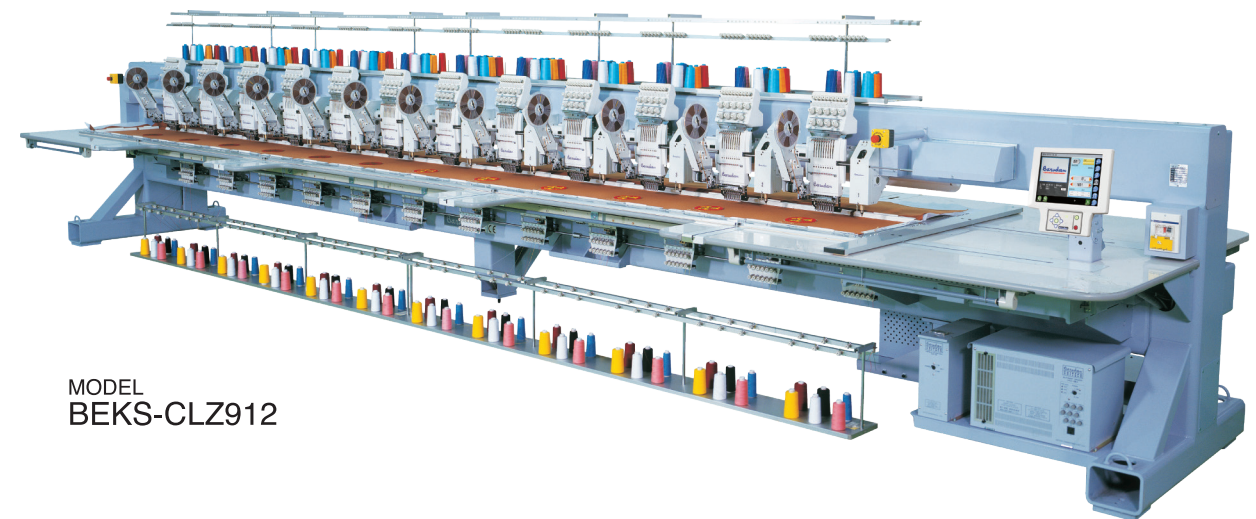
**Chenille  
Combination  
Embroidery  
Machine**



## New generation Chenille combination machine with Barudan's long history and latest technology



MODEL  
BEKS-CLY812



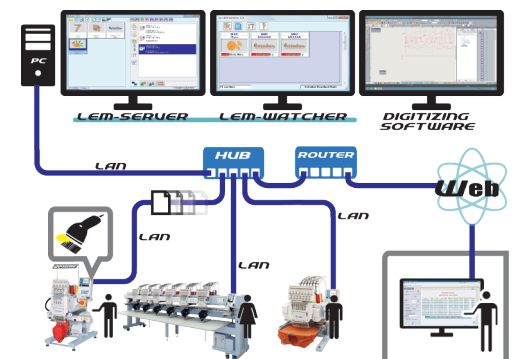
MODEL  
BEKS-CLZ912

*LAN compatible automat for easy networking.*

### LEM Server System (Option)

*Quick and Easy Design Transfer to Machines using a Barcode Scanner.*

- Able to connect to 100 Barudan machines.
- Production Efficiency Reporting is available on the LEM Pro version and is even accessible from anywhere via the web.
- "Report" what head on which machines need maintenance.
- "See" what your machines are producing even from home.
- "Know" which employees and machines are more productive.



### BARUDAN CO., LTD.

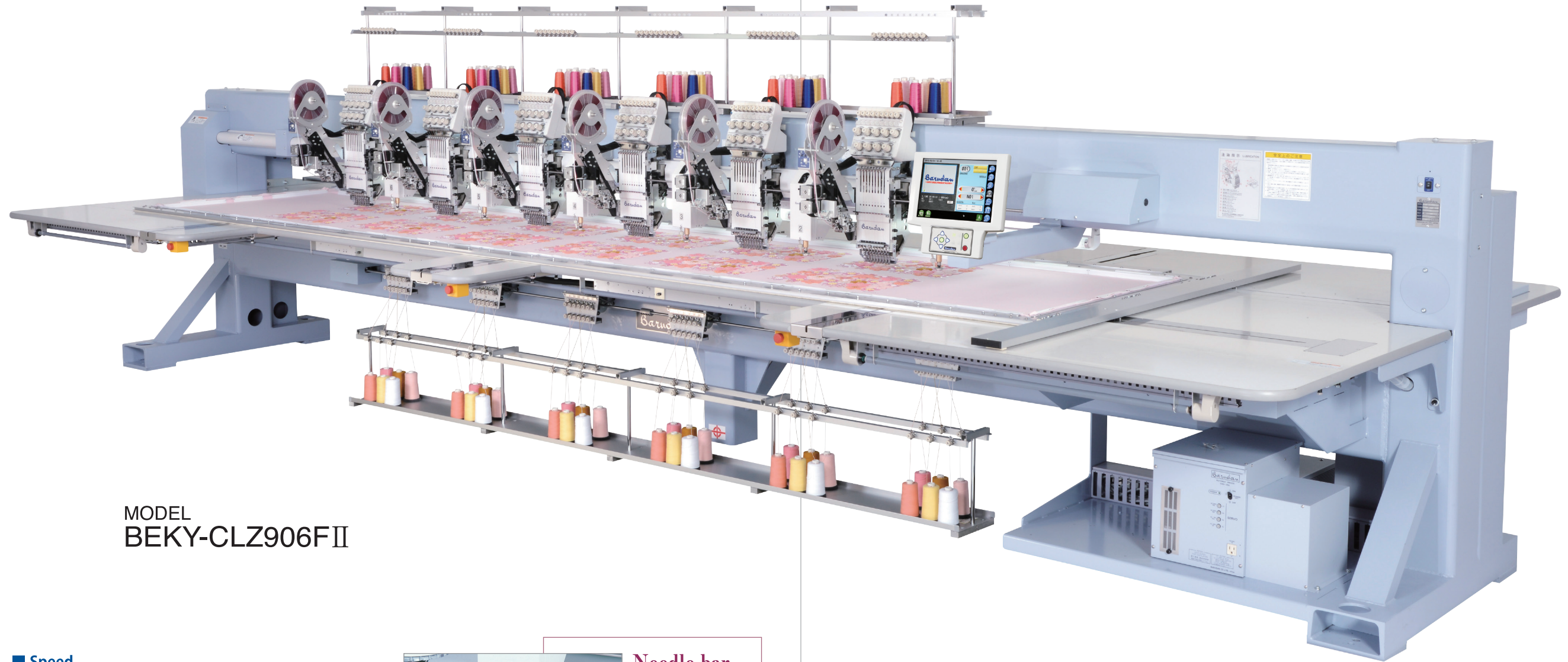


ISO9001

■ Sales Headquarter  
20 Tsukagoshi, Josuiji, Ichinomiya-city, Aichi-pref.,  
491-0004 Japan  
Phone +81 586-76-1137  
Fax +81-586-77-1499  
URL <http://www.barudan.co.jp/>  
E-mail [info@barudan.co.jp](mailto:info@barudan.co.jp)

Agent:

# Chenille Combination Machine with Barudan's latest technology



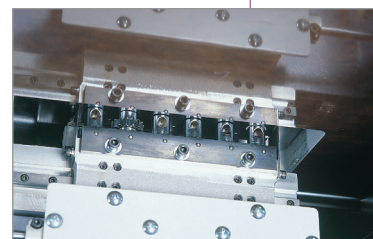
MODEL  
BEKY-CLZ906FII

- **Speed**  
(Standard Embroidery) 200~1,000rpm.  
(Chenille Embroidery) 200~650rpm.
- **Automatic Color Change in 6 colors for chenille**
- **Automatic Trimming System**
- **Automatic Chenille Needle Height Control in 10 levels**
- **Automatic Pressure Foot Lift Control for easy frame change**
- **Option**  
Sequin Device  
Double Sequin Device (Slide Head)  
Twin Sequin Device  
Double Twin Sequin Device (Slide Head)



### Needle bar

- Automatic needle bar height adjustment control
- Automatic needle bar lift control system



### Looper

- Automatic colour change in 6 colours
- High speed change over between loop and chain stitches

### Machine Specifications / Main Dimensions

MODEL	Embroidery Area (mm)	Needle Distance (mm)	Number of colors for embroidery	Number of colors for chenille	Speed (rpm)		Power Supply (v)	Power Consumption (kw)	Dimensions (mm)		
					Standard Embroidery	Chenille Embroidery			L	W	H
BEKS-CLY806	600×500/500		8				1 φ 100~240 3 φ 200~415	1.3	5670	1770	
	1000×500/500								2570		
BEKS-CLY812	750×500/500	500					2.5	8670	2070	1670	
	1000×500/500							2570			
BEKS-CLZ912	750×500/500		9	6	200~1000	200~650	3 φ 200~415	8730	2070		
	1000×500/500							2570			
BEKS-CLZ914	750×500/500		12				2.8	9730	2070		
	1000×550/550							2570			
BEKS-CLZ1212	1000×550/550	550					2.5	9470	2570		

Note 1 : The embroidery area indicated above allows for maximum pantograph movement. The frame used may restrict the actual embroidery field size.

Note 2 : Other embroidery areas are available upon consultation.

Note 3 : Machines and Specifications are subject to change at any time without prior notice.

