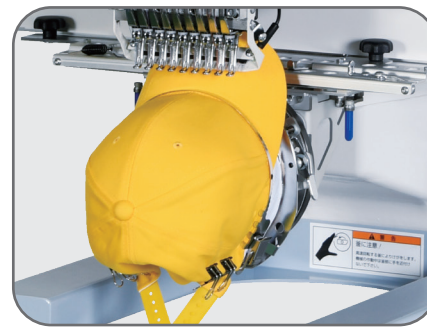


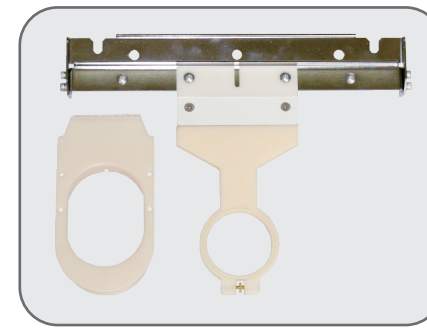
BEKT-S1501CAII



Accessories



Wide Cap Frame



Sock Frames



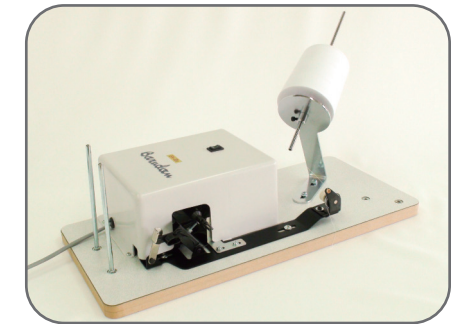
Frames for Finished Products



Detachable Table



Steel Stand

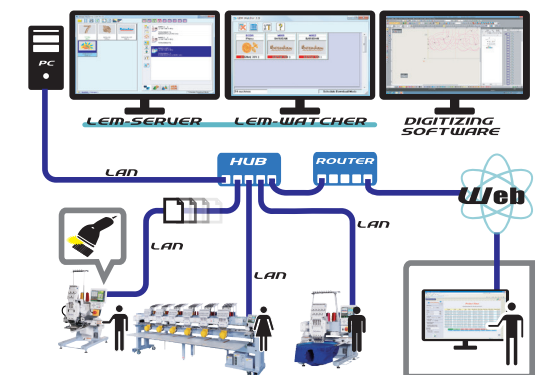


Bobbin Winder (BN-IIIe)

LEM Server System (Option)

Quick and Easy Design Transfer to Machines using a Barcode Scanner.

- Able to connect up to 100 Barudan machines.
- Production Efficiency Reporting is available on the LEM Pro version and is even accessible from anywhere via the web.
- "Report" what head on which machines need maintenance.
- "See" what your machines are producing even from home.
- "Know" which employees and machines are more productive.



BARUDAN CO., LTD.



■ Sales Headquarter
20 Tsukagoshi, Josuiji, Ichinomiya-city, Aichi-pref.,
491-0004 Japan
Phone +81 586-76-1137
Fax +81-586-77-1499
URL <http://www.barudan.co.jp/>
E-mail info@barudan.co.jp

Agent:

Barudan
THE MOST ADVANCED EMBROIDERY MACHINE SINCE 1959

ELITE JUNIOR II type S15



MODEL
BEKT-S1501CAII



- Frame Centering Function
- Frame Limit Function
Able to restrict machine operation when a design does not fit to the frame or when there is a risk of a needle bar hitting the frame.
- Shortcuts
Customize most-used icons to save time.
- LAN Connector Standard, 2 USB ports
- Touch screen (8.4 inch, Resolution 800×600)
- 70 million stitch capacity, 100 memory locations

Name Drop

Separates names in a multiple name design for view and sewing purposes.



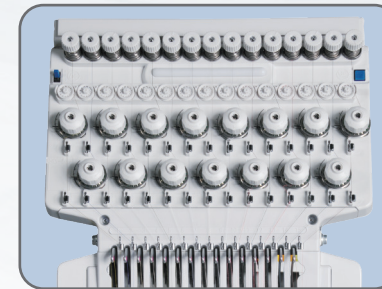
Name Drop Drive Mode



Name in Name List

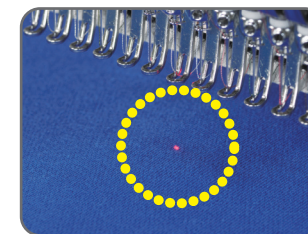


Name in Thumbnail List

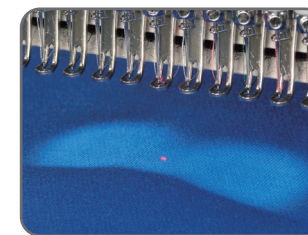


New tensioner system provides better and easier thread tensioning and improved thread break accuracy.

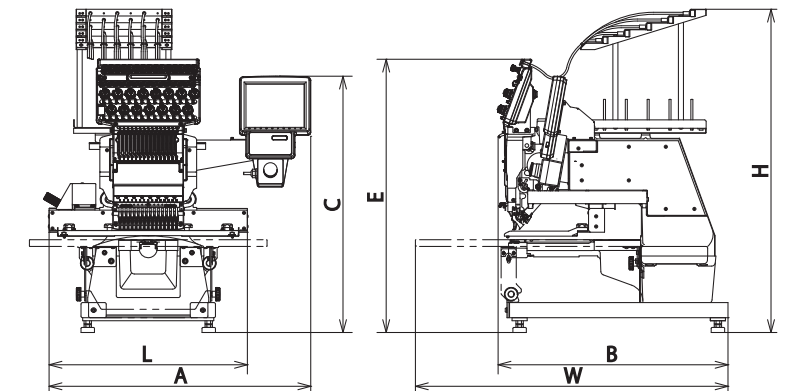
Features



Laser Pointer



LED Light



Machine Specifications / Main Dimensions

MODEL	Embroidery Area (mm)	Cap Frame (mm)	Frames for Finished Products Maximum (mm)	Number of Needles	Stitch Length (mm)	Speed (rpm)	Power Supply (v)	Power Consumption (kw)	Dimensions (mm)							Weight (kg)
									L	W	H	A	B	C	E	
BEKT-S1501CAII	250 × 400	72 × 360	(Usage Frame) 300 × 430 (Availability Embroidery Area) 250 × 400	15	0.1 ~ 12.7	(Tubular Frame) 200 ~ 1200 (Cap Frame) 200 ~ 1000	1 φ 100 ~ 240	0.225	600	930	960	780	690	765	815	73

- The embroidery area indicated above allows for maximum pantograph movement. The frame used may restrict the actual embroidery field size.
- Machines and Specifications are subject to change at any time without prior notice.